

Callaway County Court Order

State of Missouri }
Callaway County } SS

July

Term 20 24

In the County Commission of said county, on the 1st day of July

20 24 the following, among other proceedings, were had, viz:

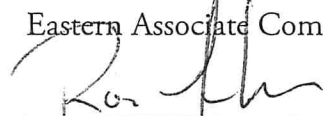
Now on this day, the Callaway County Commission does hereby expand the MS-4 Boundaries extending them by a one mile radius including all territory situated between old Highway 54 and the new Highway 54 between the city limits of New Bloomfield and Holts Summit.

(see attached)

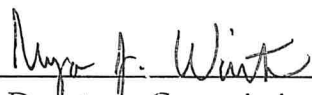


Gary Jungermann
Presiding Commissioner

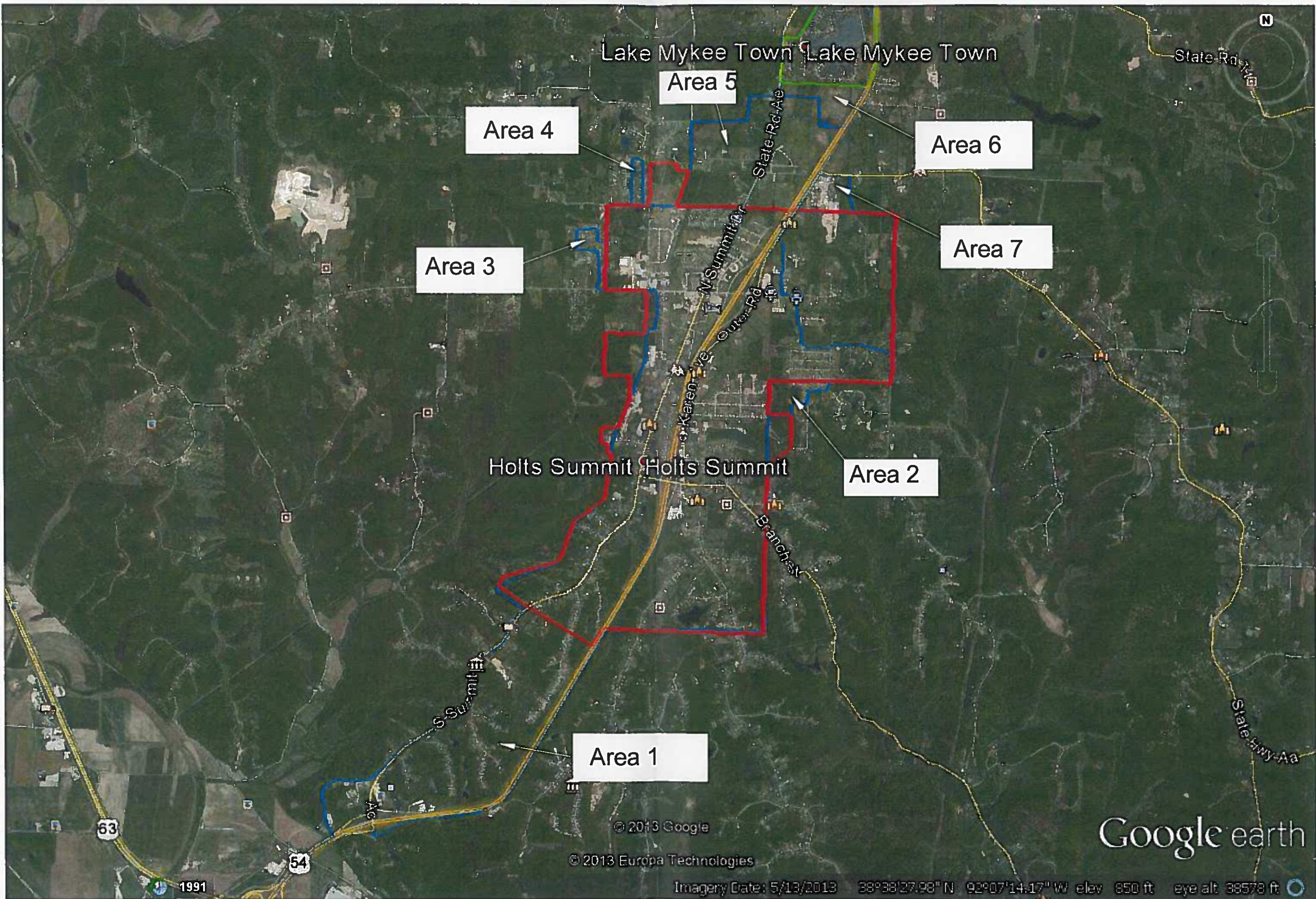
Randall Kleindienst
Eastern Associate Commissioner



Roger Fischer
Western Associate Commissioner

Attest: 

Deputy to Commission



Lake Mykee Town Lake Mykee Town

Area 5

Area 4

Area 6

Area 3

Area 7

Holts Summit Holts Summit

Area 2

Area 1

State Rd Ae

N Summit

Outer Rd

Karen Ave

Branches

S-Summit

State Hwy Aa

53

54

1991

© 2013 Google

© 2013 Europa Technologies

Imagery Date: 5/13/2013 38°38'27.98" N 92°07'14.17" W elev 850 ft eye alt 38578 ft

Google earth